

Serving Children for Over 100 Years...

Beacon Light Behavioral Health Systems was founded in the early 1900's to provide services to children abandoned or orphaned by the early oil and lumber industries. Throughout its history, the agency has provided quality care to young people. As the needs of our society changed, Beacon Light Behavioral Health Systems evolved into a private, not-for-profit social service agency providing quality, professional behavioral health and educational services to young people.

Beacon Light Behavioral Health Systems' continuum of care includes residential treatment (RTF), treatment foster care (TFC), emergency shelter placement, partial hospitalization programs, alternative education, Family Based Mental Health (FBMH), Behavioral Health Rehabilitative Services (BHRS or Wrap Around), Summer Therapeutic Activities Program (STAP), Intensive Case Management (ICM), Resource Coordination (RC), treatment for sexually aggressive youth, outpatient therapy, and residential services for the mentally retarded/developmentally disabled (Ramsbottom Center).



Beacon Light Behavioral Health Systems
is accredited by the

**Joint Commission on Accreditation of
Healthcare Organizations.**

Beacon Light Behavioral Health Systems
800 East Main Street
Bradford, PA 16701

Multisystemic Therapy (MST)

from



BEACON LIGHT
BEHAVIORAL HEALTH SYSTEMS



*Serving Families in
McKean, Elk, Cameron,
Potter & Warren
Counties*

Multisystemic Therapy (MST)

Multisystemic Therapy (MST) is a unique, goal-oriented, strength focused, comprehensive treatment program designed to serve multi-problem youth in their community. MST is the only family-focused and community-based treatment program that has been the focus of several major research studies and has demonstrated clinical and cost effectiveness for youth with complex emotional, social and academic needs.

MST was developed at the Family Services Research Center at the Medical University of South Carolina, and uses only treatment strategies that are supported by research. MST is effective in helping youth with chronic, violent delinquent behavior and youth with serious emotional problems, including truancy and academic problems/failure, serious disrespect and disobedience, aggressive behavior (fighting and property destruction), criminal behavior, drug & alcohol problems, or running away.

What does MST involve?

MST includes a complete functional assessment of your child in the context of their family, school and community, seeking to understand the “fit” between your child’s problems and the factors which contribute to them. Additionally, MST focuses on helping parents build supportive social networks, empowering parents to address the needs of their child more effectively, and emphasizing **long-term** change that families can maintain when the program is completed. Services may include any combination of family therapy, marital therapy, individual therapy with parents/caregivers, chemical dependency assessment and treatment, evaluation of the youth’s peer network and arranging of alternative activities, consultation with schools, arranging for psychiatric consultation, or coordinating activities with school systems, court, and/or other social service agencies.

How is MST “home-based”?

MST Therapists are available 24 hours a day, 7 days a week to provide services in the home, school neighborhood and community. Your therapist’s caseload is smaller, and treatment is intensive, often including multiple contact with the family and other participants each week. Each therapist is fully trained in the principles of MST and receives supervision both directly and from an expert consultant on a weekly basis.

Who is MST for?

MST is for youths between the ages of 12 and 17 who are at risk of out-of-home placement. The youth must be living in a home environment with a primary caregiver, or must be returning home within 30 days. Youth who are actively homicidal, psychotic, diagnosed with an Autism Spectrum Disorder, or who’s referral behavior is primarily related to sexual offending **are not** appropriate for MST. Additionally, the youth should not be receiving other in-home services that are expected to continue during MST treatment, and any current/pending charges are not expected to result in incarceration or out-of-home placement longer than 30 days.

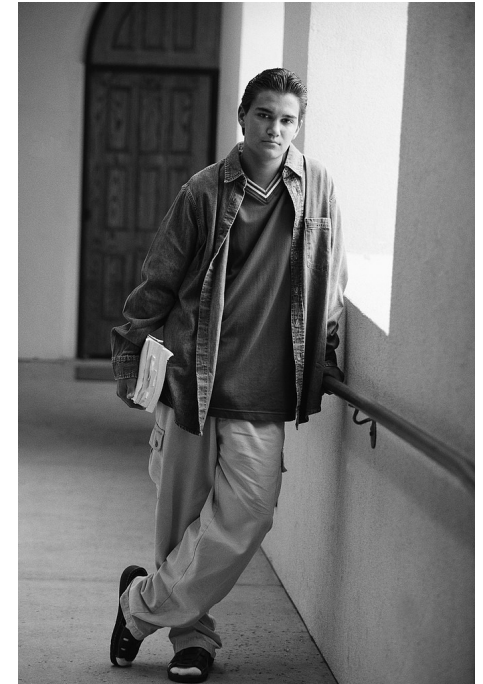
How do I make a referral???

To make a referral to the MST Program,
please contact:

Beacon Light Behavioral Health Systems

Multisystemic Therapy
800 East Main Street
Bradford, PA 16701
Phone: 814/817-1400
Fax: 814/362-2185

Or call your local Dept. of Human Services



**Questions? Concerns? On-site tours?
Group Presentations? Call us!!!**

**Marketing & Communications
1-800-345-1780**